



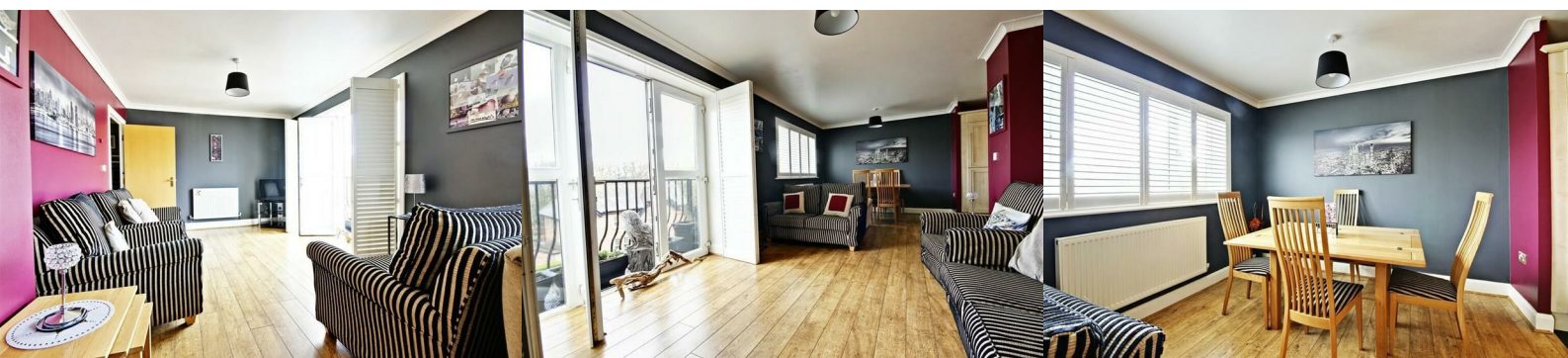
9 South Haven

Lawe Road South Shields, NE33 2BD

£135,500



A beautifully presented Second Floor Apartment with great views of the North Marine Park and out to the coastline. Well positioned for the town centre facilities, local restaurants and all that the sea front has to offer, this apartment would be ideal for the single person or couple looking for a secure place to call home or a lock up and leave. The home comes with a lounge diner open plan to a fitted kitchen with appliances, has one bedroom and a bathroom. With lift access and secure gated parking, viewing is a must.



Communal entrance

Via an entry system leading to a large open entrance hall with lift and stairwell to all floors

Entrance hall

A lovely entrance hall with built in storage cupboard housing the electric central heating boiler, laminate floor and a radiator

Lounge diner

Across the front of the home with French doors leading to a Juliet balcony to make the most of the views towards the North Marine Park and coastline. There are plantation style shutters to the French doors and windows, laminate floor and two radiators. The room is open plan to the kitchen

Kitchen

Fitted with wall, base units and work surfaces housing a sink unit, electric hob with oven under and filter hood over, integral fridge freezer, washer and dishwasher, tiled splash backs

Bedroom

Plantation style shutters to the window, laminate floor and a radiator

Bathroom

Bath with Mira mixer shower, wash basin and WC, part tiled walls and a radiator

External

Rear secure car park via electric gate, car parking bay

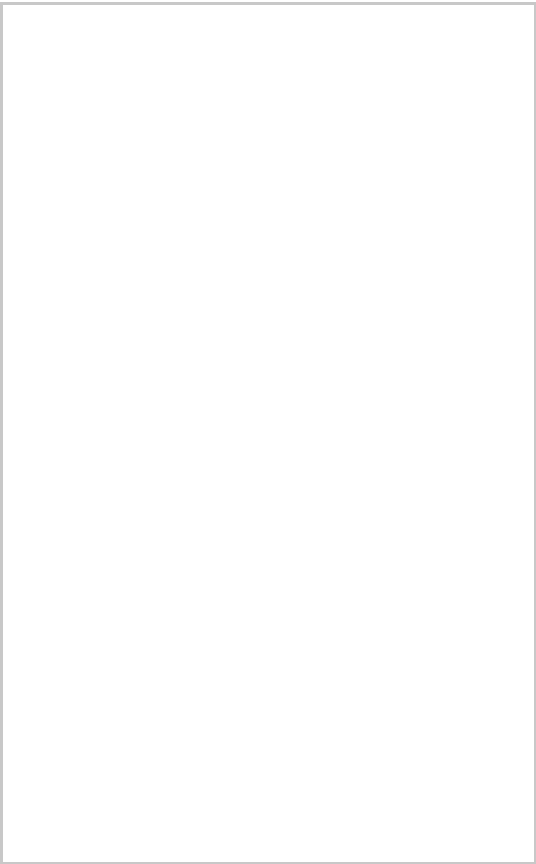
Note

A maintenance charge is payable to Kingston Property management for the upkeep of all communal areas, lifts and car park access gate. This also includes the buildings insurance and is approximately £128.89 per month, possibly paid half yearly. Long leasehold 125 years from 2005

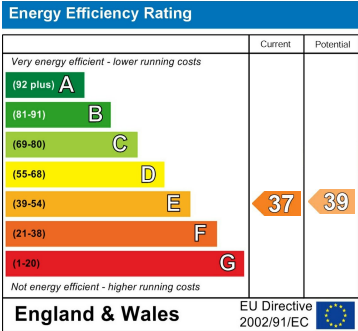
Area Map



Floor Plans



Energy Efficiency Graph



These particulars, whilst believed to be accurate are set out as a general outline only for guidance and do not constitute any part of an offer or contract. Intending purchasers should not rely on them as statements of representation of fact, but must satisfy themselves by inspection or otherwise as to their accuracy. No person in this firms employment has the authority to make or give any representation or warranty in respect of the property.